



WE-MEP

Mechanical
Electrical
Plumbing

LARGE SCALE PROJECT

COMPANY PROFILE

www.we-mep.rw

Sypnosis

- About Us..... 1
- CEO's statement..... 3
- Our Services..... 5
- List of Projects..... 12
- Project Execution..... 17
- Our Clients..... 27
- Contact Us..... 28

ABOUT US

WE-MEP LTD is a registered company in RWANDA. The Head Office is located at Kacyiru, Kigali. So we can deliver a more convenient service to our clients across the country.

After a couple of years, we have proven our position in the market in the field of MEP Services, Execution, by being one of the fastest growing companies in the Region.

WE-MEP LTD understands the needs of each company participating in various Projects. Every client has distinctive requirements, and we are committed to providing the most suitable solutions in terms of MEP Design, Supply, Execution, and after-maintenance services.

WE-MEP LTD has professional staff who will certainly assist you from the design and planning stage until the successful implementation. Our team is equipped with the latest machinery, equipment, tools, materials, and most of all, skilled and dedicated workers.



At WE-MEP LTD, we go beyond meeting expectations we exceed them. We are dedicated to consistently delivering premium MEP solutions that integrate innovation, efficiency, and sustainability.

Our approach ensures clients a seamless, turnkey experience by providing comprehensive MEP design and engineering energy solutions.

Our expert engineers develop cutting-edge designs that optimize both functionality and cost-effectiveness, reinforcing WE-MEP's reputation for excellence in the industry.



Commercial



Residential



Government



Industrial



Healthcare



Aviation



Apartment



Design and Built

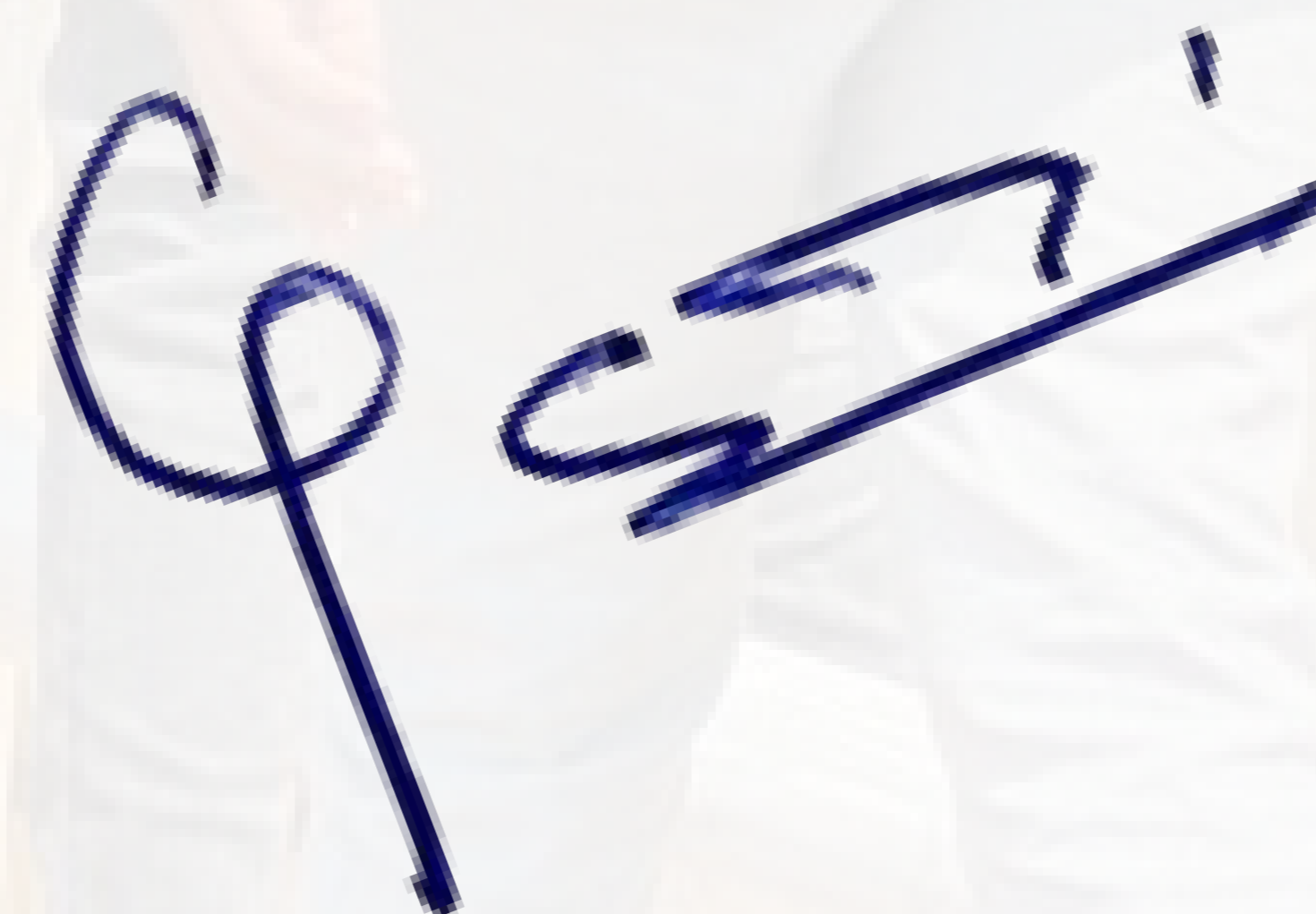
CEO's statement

At WE-MEP LTD, our commitment goes beyond engineering, we are dedicated to shaping the future of infrastructure through innovation, precision, and sustainability.

From the beginning, our vision has been clear: to deliver top-quality MEP solutions that exceed industry standards while providing long-term value to our clients. Every project we undertake reflects our dedication to excellence, from initial design to final execution.

We don't just construct systems; we build trust, efficiency, and lasting partnerships. Our expert team meticulously crafts every detail to enhance performance, safety, and sustainability.

Eng. Delphin TUYISHIME





Vision

To be the leading MEP services provider, recognized for professional, innovative, quality, and customer-focused solutions that enhance building efficiency and sustainability

Mission

At WE-MEP Ltd, our mission is to provide high-quality, efficient, and sustainable MEP solutions, ensuring seamless integration, cost-effectiveness, and long-term client satisfaction.



Services

We provide comprehensive Design, Installation, Maintenance, and Material Supply of MEP systems. Our services are tailored to meet the specific needs of various projects, ensuring optimal performance, energy efficiency, and sustainability.

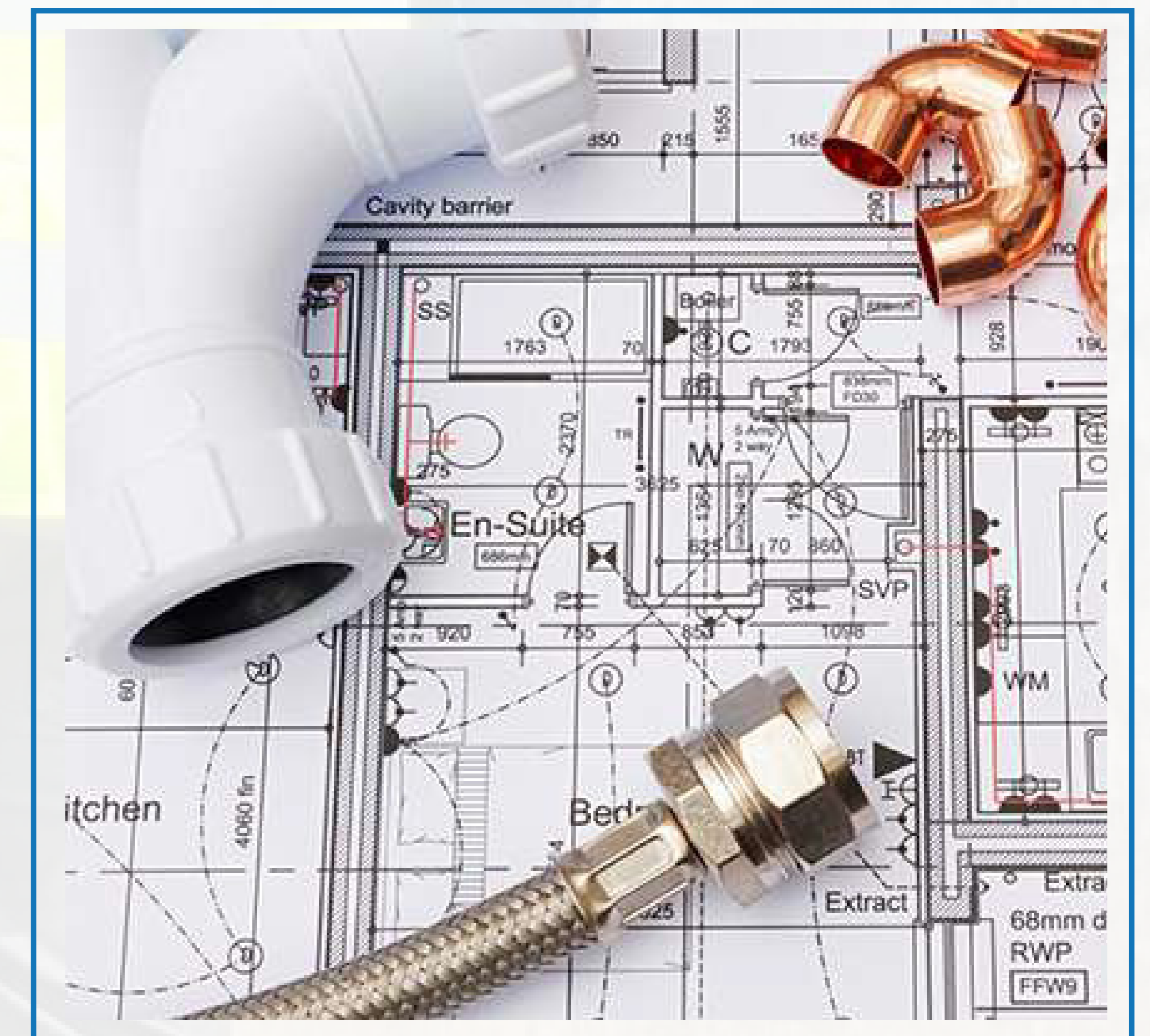


Mechanical Services

WE-MEP provides cutting-edge mechanical solutions, from system design to installation and optimization. Our expertise spans HVAC, ventilation, and mechanical piping, ensuring efficient and reliable performance. We customize our services to meet the specific demands of each project, delivering durable and sustainable systems.

Plumbing Services

WE-MEP offers a complete range of plumbing services, from feasibility studies to installation and maintenance. Our team ensures efficient water supply, drainage, and sanitary solutions for residential, commercial, and industrial projects. We deliver reliable systems that meet industry standards while tailoring our services to client needs.





Electrical Services

At WE-MEP, we provide comprehensive electrical engineering services from concept to installation. Our solutions include power distribution, lighting, and safety features that enhance operational efficiency. As a trusted contractor, we deliver innovative systems while collaborating closely with design teams.

Maintenance Services

Our maintenance services ensure the longevity and efficiency of your MEP systems. WE-MEP offers routine inspections, troubleshooting, and repairs to keep your infrastructure in optimal condition. Our proactive approach minimizes downtime and extends the lifespan of critical systems.





Integrity

We are honest and transparent in everything we do.



Innovation

We use new ideas and smart solutions to stay ahead.



Customer-Centric Approach

We listen to our clients and give them exactly what they need.



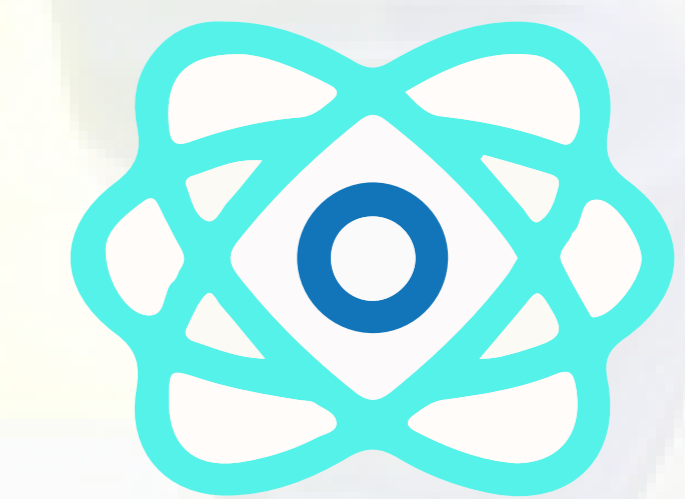
Sustainability

We care for the environment and design energy-saving systems.



Collaboration

We work together with clients and partners to deliver great results.



Technology

We use the latest tools to make our work faster, safer, and better.



Why WE-MEP ?

At WE-MEP LTD, professionalism is at the core of everything we do. With over five years of industry experience, our team of certified experts is committed to delivering high-quality, efficient, and sustainable MEP solutions. We stand out by leveraging advanced digital tools, such as the WE-MEP Applications (WE-MEP APP, WE-MEP CALCULATOR) to enhance real-time communication, streamline project coordination, and ensure client transparency. We ensure seamless coordination of mechanical, electrical, and plumbing systems, optimizing energy efficiency, space utilization, and long-term functionality. Our dedication to innovation and excellence makes us the ideal partner for achieving reliable, forward-thinking MEP engineering solutions.



We come with —

1

Comprehensive MEP Solutions

WE-MEP offers a full range of MEP services, including engineering design, installation, commissioning, system upgrades, and maintenance. Our integrated approach allows clients to rely on a single, trusted provider for all their electrical, mechanical, and plumbing needs, ensuring seamless execution and consistency across projects.

2

Proven Experience & Strong Reputation

Since its founding, WE-MEP LTD has built a solid reputation by delivering high-quality, precision-engineered MEP solutions. We specialize in serving critical-use facilities and complex projects, ensuring reliability, efficiency, and compliance with industry standards.

3

Innovative Technology & Process Optimization

WE-MEP utilizes cutting-edge technology, advanced digital tools, and proprietary systems to enhance efficiency, reduce costs, and accelerate project completion without compromising on quality. Our approach ensures that clients receive highly-engineered, customized solutions tailored to their unique needs.

4

Skilled Workforce & Scalable Operations

WE-MEP offers a full range of MEP services, including engineering design, installation, commissioning, system upgrades, and maintenance. Our integrated approach allows clients to rely on a single, trusted provider for all their electrical, mechanical, and plumbing needs, ensuring seamless execution and consistency across projects.

Our Team



Eng. Naveen Kumar
Managing Director

Eng. Naveen Kumar is a Senior MEP Engineer with over 12 years of international experience across Saudi Arabia, India, Kenya, Rwanda, and Dubai. Currently serving as Managing Director at WE-MEP LTD, he specializes in the design, execution, and supervision of HVAC, plumbing, sanitary, and firefighting systems. Holding both Bachelor's and Master's degrees in Engineering, he brings expertise in tender pricing, BOQ/BOM preparation, and AutoCAD shop drawings. His work spans advanced mechanical systems—ductwork, VRV, CRAC units, TAB commissioning, and BMS integration—along with plumbing networks using PPR, HDPE, UPVC, and water treatment systems. In fire protection, he ensures compliance with global safety standards for firewater and suppression systems. Naveen combines technical excellence with leadership to deliver efficient, sustainable, and high-quality MEP solutions.



Mr. Jean Claude MUHIRE
Director of Administration and Finance (DAF)

Mr. Jean Claude Umuhire is a finance and administration professional with over 10+ years of experience in accounting, auditing, and logistics. He holds a Master's degree in Finance and Accounting and currently serves as the Director of Administration and Finance (DAF) at WE-MEP LTD. Known for his integrity, accuracy, and strong work ethic, he is highly skilled in financial reporting, procurement, budgeting, and organizational management. Jean Claude plays a key role in ensuring financial stability, regulatory compliance, and efficient administrative operations within the company. He is fluent in English, French, and Kinyarwanda, enabling effective communication across diverse teams and stakeholders.



Eng. Evode BYUKUSENGE
Operations Manager

Eng. Evode BYUKUSENGE is a Rwandan Electrical Engineer with a Bachelor's Degree in Electrical Power Engineering from the University of Rwanda – CST. With over eight years of experience, he has spearheaded projects across multi-story buildings, commercial complexes, and upscale residences. Trained in Denmark and Rwanda, he's a specialist in electro-mechanical systems like generators, HVAC, solar power plants, and wastewater treatment systems. His expertise extends to power distribution, lighting systems, earthing, and lightning protection, as well as advanced electrical accessories like motion sensors. Eng. Evode also excels in deploying smart systems such as sound setups, telephone networks, fire alarms, and TV distribution frameworks. As a certified engineer by RURA and an active member of the Institution of Engineers Rwanda (IER), he blends strategic planning with technical precision. His commitment to safety, efficiency, and sustainability makes him a standout professional in his field.

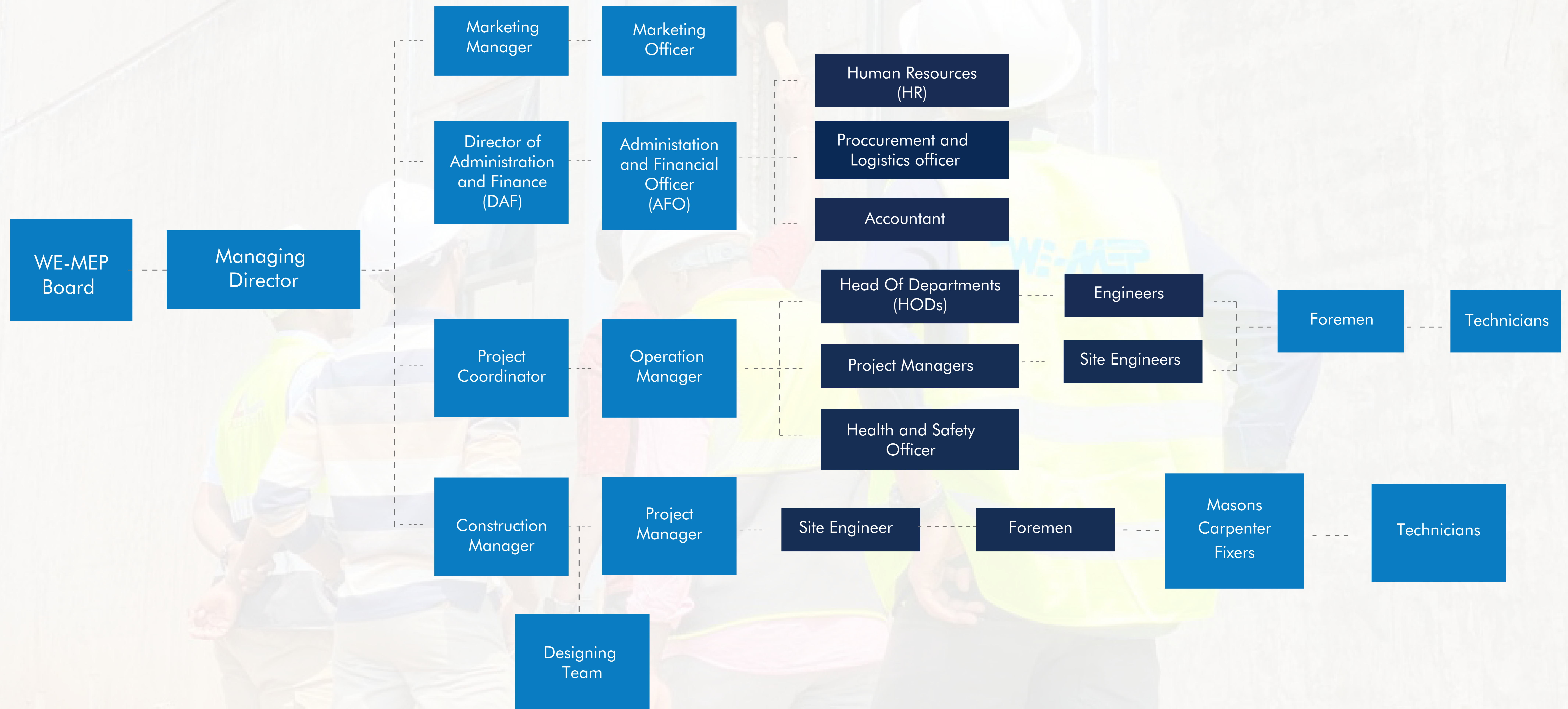


Eng. Hassan SOULEYMAN
Project Coordinator

Eng. Hassan SOULEYMAN is a Professional Electrical Engineer with expertise in electrical utilities, solar systems, and building services. As Project Coordinator at WE-MEP LTD, he leads the design and execution of MEP systems, including MV/LV networks, SCADA, generators, transformers, UPS, and BUSWAYS. He ensures system safety through proper earthing and delivers efficient designs for lighting, wiring, and control panels.

Hassan integrates fire alarms, CCTV, data networks, fiber optics, AV, and other low-current systems into building infrastructure, ensuring seamless coordination with HVAC and mechanical systems. Proficient in AutoCAD, Revit, and Dialux, he holds a Master's in Electrical Engineering from Ege University and is committed to sustainable, high-performing solutions.

Organization Chart



LIST OF ALL PROJECTS

MEP EXECUTION PROJECTS

	Project Name	Client	Scope of work
1.	RWANDA BULK FERTILIZER BLENDING PLANT	MOTA ENGIL AFRICA	We were responsible for the Installation of Electrical, IT, and Lighting Poles materials and installation with their fixtures, spotlights, and CCTV Cameras, Lighting system- installing mats, air terminal rods, and down conductors
2.	REMCO FACTORY	HORIZON CONSTRUCTION LTD	We were responsible for the Installation of Electrical, IT, and Lighting Poles materials and installation with their fixtures, spotlights, and CCTV Cameras, Lighting system- installing mats, air terminal rods, and down conductors.
3.	BUGESERA SPECIAL ECONOMIC ZONE (BSEZ) HEAD OFFICES	MISTER ROOF	We were responsible for the supply and installation of mechanical, electrical, and plumbing systems
4.	KING FAISAL HOSPITAL	MISTER ROOF	We were responsible for the supply and installation of mechanical, electrical, and plumbing systems
5.	ROYAL GOLF VIEW APARTMENT & HOTEL	DND DEVELOPERS	We were responsible for the installation of mechanical, electrical, and plumbing systems
6.	RPF KAMONYI DISTRICT HQs	RPF KAMONYI	We were responsible for the supply and installation of mechanical, electrical, and plumbing systems
7.	VISION CITY PHASE II	MOTA ENGIL AFRICA	We were responsible for the supply and installation of MEP systems.

LIST OF ALL PROJECTS

MEP EXECUTION PROJECTS

	Project Name	Client	Scope of work
8.	NEW BUGESERA INTERNATIONAL AIRPORT	MOTA ENGIL AFRICA	We were responsible for the Installation of Electrical, IT, and Lighting Poles materials and installation with their fixtures, spotlights, and CCTV Cameras, Lighting system- installing mats, air terminal rods, and down conductors
9.	BIONTECH	MOTA ENGIL AFRICA	We were responsible for the Installation of electrical and IT systems
10.	GAHANGA 528 HU	AFRIPRECAST Ltd	We were responsible for the supply and Installation of mechanical and plumbing systems
11.	HEZA ESTATE PHASE II	AFRIPRECAST Ltd	We were responsible for the supply and Installation of electrical and plumbing embedded systems
12.	KAGITUMBA CROSS BORDER] MARKET	HORIZON CONTRUCTION LTD	We were responsible for the installation of mechanical, electrical, and plumbing systems
13.	BUGESERA REAL ESTATE	MUKERAMIRIMO CONSTRUCTION LTD	We were responsible for the installation of mechanical, electrical, and plumbing systems
14.	RANGO MORDEN MARKET	HUYE DISTRICT	We were responsible for the supply and installation of mechanical, Electrical, and Plumbing systems
15.	ALIANCE INVESTMENT BUILDING (AIB)	ALLIANCE INVESTMENT	We were responsible for the supply and installation of mechanical, electrical, and plumbing systems

LIST OF ALL PROJECTS

MEP EXECUTION PROJECTS

	Project Name	Client	Scope of work
16.	KOZO RESTAURANT KIGALI	LIFESTYLE EXPERIENCES	We were responsible for the supply and installation of mechanical, electrical, and plumbing systems
17.	KAGITUMBA CROSS BORDER	DIRECTORATE GENERAL OF IMMIGRATION AND EMIGRATION (DGIE)	We were responsible for the rehabilitation of the Sewage Treatment plant
18.	KIGALI ALLIANCE BUSINESS CENTER	ALLIANCE INVESTMENT	We were responsible for the supply and installation, and Commissioning of Mechanical, Electrical, and Plumbing systems, and supervision of renovation works
19.	DRD (DEVELOPMENT DEVELOPMENT AND RURAL DURABLE)	AFRITRADE LTD ABC	Installation, testing and commissioning of plumbing appliances and their fixtures
20.	ONE & ONLY GORILLA NEST RESORT	ONE & ONE GORILLA NEST RESORT	Inspection, Supply and fixing of golf cart spare parts and their maintenance
21.	KABC (KIGALI ALLIANCE BUSINESS CENTER)	AIL ALLIANCE INVESTMENT LTD	Construction of control room in basement and their MEP&IT systems installation
22.	KABC HOTEL	KABC HOTEL	Interior design and implementation of conference room, basement restaurant, reception and VIP restaurant at the roof top

LIST OF ALL PROJECTS

MEP EXECUTION PROJECTS

Project Name	Client	Scope of work
23. IRCAD AFRICA	MOD (RF:RESERVE FORCE)	Supply and installation of kitchen hood, mechanical extraction fan (fresh air duct) and AC Dampers
	AVIC INTERNATIONAL	We were responsible for the supply and installation of HVAC systems

MAINTENANCE PROJECTS

1.	ALIANCE INVESTMENT BUILDING (AIB)	RWANDA HOUSING AUTHORITY (RHA)	WE-MEP Ltd provides full building maintenance services, covering lifts, HVAC, STP, solar lighting, generators, and rainwater systems. We also service CCTV, access control, TV networks, and sound systems to ensure long-term efficiency and sustainability.
2.	KIGALI ALLIANCE BUSINESS CENTER	ALLIANCE INVESTMENT	We ensured the safe and efficient maintenance of all building systems through comprehensive MEP maintenance, including HVAC, fire protection, water supply, electrical, and ELV systems such as CCTV and access control. Additionally, we maintained drainage, sanitation, and sewage treatment systems, ensuring long-term sustainability and reliable performance.

LIST OF ALL PROJECTS

MEP EXECUTION PROJECTS

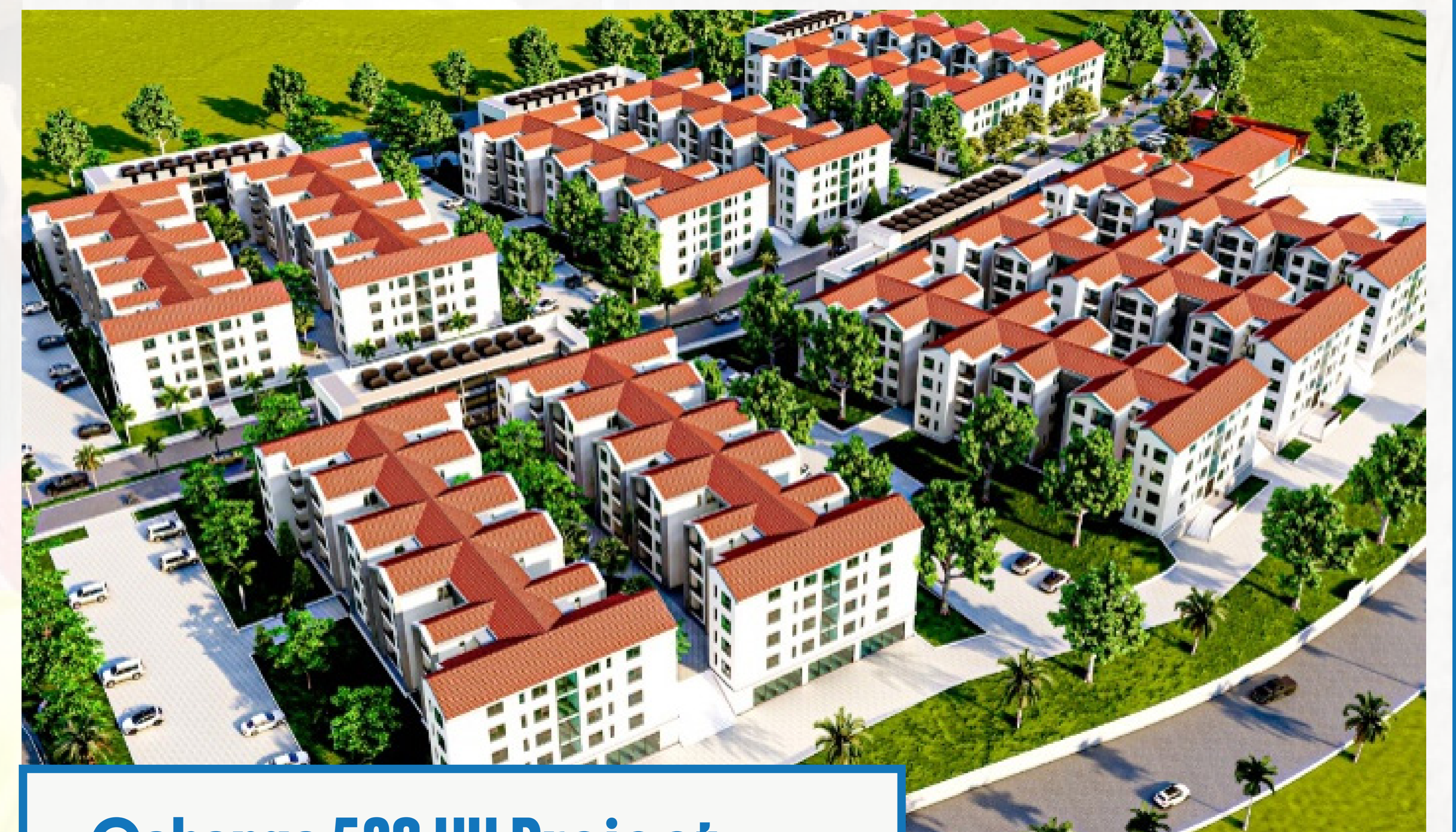
	Project Name	Client	Scope of work
1.	AGABA APARTMENT KIBAGABAGA	AGABA ENGINEERING Ltd	At AGABA Apartment, WE-MEP/SPI delivered full building services, ensuring comfort, security, connectivity, and efficient water management for residents.
2.	AGABA APARTEMENT KIMIHURURA	AGABA ENGINEERING Ltd	WE-MEP/SPI provided complete services at AGABA Apartment, ensuring reliable energy, enhanced security, seamless connectivity, and efficient water and drainage management.
3.	MARTIN VILLA HOUSE	Martin MIETH	WE-MEP/SPI delivered comprehensive MEP services at Rebero Residential, ensuring reliable energy, security, connectivity, and efficient water management for residents

Project Execution

Project Execution



IRCAD AFRICA



Gahanga 528 HU Project

Client Name: AVIC International

Category: Healthcare

Location: Kigali, Rwanda

Scope of Work: IRCAD Africa is a world-class medical training and research center in Masaka, Kigali, focused on advancing minimally invasive surgery. As part of the global IRCAD network, it offers high-tech training programs for surgeons and medical professionals. At IRCAD We were responsible for the supply and installation of HVAC systems

Client Name: AFRIPRECAST Ltd

Category: Apartments

Location: Kigali, Rwanda

Scope of Work: The Gahanga 528 Housing Units Project in Kigali, Rwanda, is part of the UK-Rwanda Migration Partnership, providing quality housing for asylum seekers from Europe. WE-MEP LTD managed the supply and installation of mechanical and plumbing systems. Mechanical work included firefighting systems to ensure safety and compliance. Plumbing involved setting up water supply networks, drainage systems, and sanitary installations to support functionality and comfort for the apartments and residential units.

Project Execution



ALLIANCE INVESTMENT BUILDING (AIB)

Client Name: RHA

Category: Maintenance

Location: Kigali, Rwanda

Scope of Work: WE-MEP Ltd delivered comprehensive building maintenance services, ensuring the efficiency and safety of all systems. This included maintaining lifts, HVAC, rainwater harvesting, backup generators, Sewage Treatment Plant, and solar lighting. We also serviced CCTV, access control, TV networks, and sound systems. Our work supported the building's performance and long-term sustainability.



BIONTECH

Client Name: MOTA ENGIL AFRICA

Category: Industrial

Location: Kigali, Rwanda

Scope of Work: Our scope of work included the installation of a power supply from the main substation to switchgear, distribution through transformers to the LV room, and connection to the UPS room. Power was further extended through ATS and generator systems to critical areas, including the main facility, storage, offices, laboratories, and restaurant. The systems were installed for reliability, efficiency, and compliance with international standards.

Project Execution



KOZO RESTAURANT KIGALI

Client Name: LIFESTYLE EXPERIENCES

Category: Commercial

Location: Kigali, Rwanda

Scope of Work: WE-MEP LTD managed the supply and installation of mechanical, electrical, and plumbing systems. Mechanical work included HVAC installation for optimal climate control and ventilation. Electrical tasks involved setting up power distribution systems, lighting, and wiring for appliances. Plumbing covered water supply, drainage, and sanitary systems, ensuring smooth and efficient operations.



REMCO FACTORY

Client Name: HORIZON Construction Ltd

Category: Industrial

Location: Kigali, Rwanda

Scope of Work: The REMCO Factory project involved the construction of a modern industrial facility located in the Kigali Special Economic Zone. WE-MEP LTD provided full MEP services for the REMCO manufacturing facility, including firefighting, plumbing, and electrical systems. Our work included the design and installation of power distribution, lighting, and backup systems to ensure seamless operations. All systems were built to meet international standards, emphasizing efficiency, safety, and reliability.

Project Execution



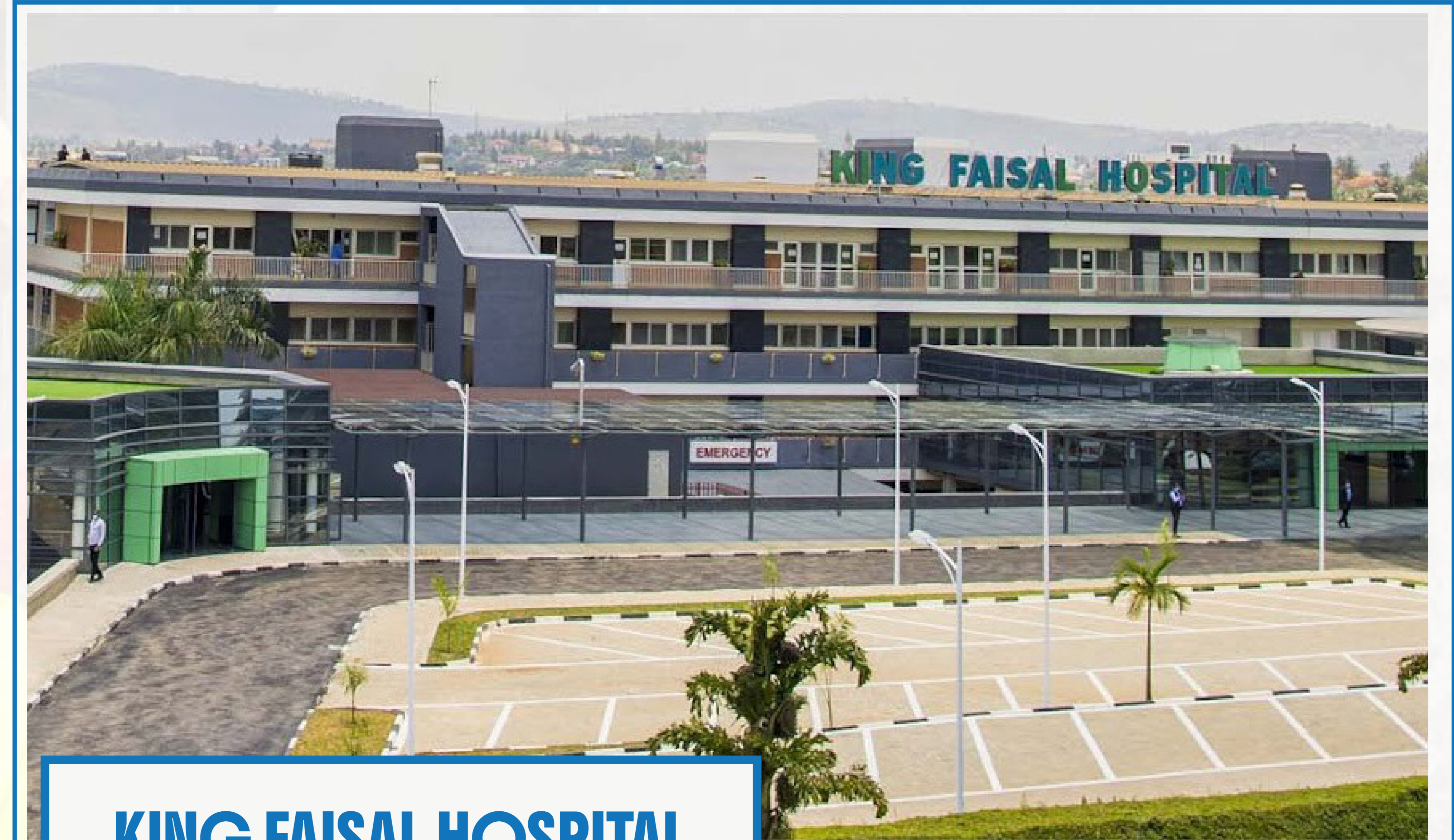
KAGITUMBA CROSS BORDER MARKET

Client Name: HORIZON Construction Ltd

Category: Commercial

Location: Nyagatare, Rwanda

Scope of Work: At Kagitumba Cross Border Market, WE-MEP LTD undertook the design and installation of mechanical, electrical, and plumbing systems. Mechanical tasks included implementing firefighting systems to ensure safety and compliance. Electrical work covered power distribution, lighting, backup generator, and wiring for operational efficiency. Plumbing involves setting up water supply, drainage, and sanitary systems to support functionality and hygiene.



KING FAISAL HOSPITAL

Client Name: MISTER ROOF

Category: Healthcare

Location: Kigali, Rwanda

Scope of Work: King Faisal Hospital Rwanda (KFHR) is a 160-bed specialty hospital built between 1987 and 1991 with support from the Saudi Fund for Development. Located in Kigali, it serves as a key referral and teaching hospital in East and Central Africa. KFHR supports Rwanda's Health Sector Strategic Plan with world-class infrastructure and skilled medical professionals. WE-MEP LTD undertook the power distribution, emergency backup, lighting, and fire protection.

Project Execution



KIGALI ALLIANCE BUSINESS CENTER

Client Name: Alliance Investment Limited (AIL)

Category: Commercial

Location: Kigali, Rwanda

Scope of Work: The Kigali Business Alliance Business Center is a modern commercial hub in the heart of Kigali, supporting the city's growing business sector. We were responsible for the supply and installation, and Commissioning of Mechanical, Electrical, and Plumbing systems, and supervision of renovation works.



Bugesera Special Economic Zone

Client Name: MISTER ROOF

Category: Commercial

Location: Bugesera, Rwanda

Scope of Work: The Bugesera Special Economic Zone (BSEZ) is a fully integrated industrial hub in Rwanda developed through a Public-Private Partnership between ARISE IIP and the Government of Rwanda. We were responsible for the supply and installation of mechanical, electrical, and plumbing systems

Project Execution



NEW BUGESERA INTERNATIONAL AIRPORT

Client Name: MOTA ENGIL AFRICA

Category: Aviation

Location: Bugesera, Rwanda

Scope of Work: At New Bugesera International Airport, WE-MEP LTD handled the supply and installation of electrical and IT systems, ensuring seamless functionality. Our electrical work included power distribution networks, lighting installations, and system wiring for efficient operations. IT tasks focused on setting up data communication infrastructure, network systems, and connectivity solutions. We also installed a high-capacity power system at the airport's substation to enhance its energy capabilities for advanced operations.



RANGO MODERN MARKET

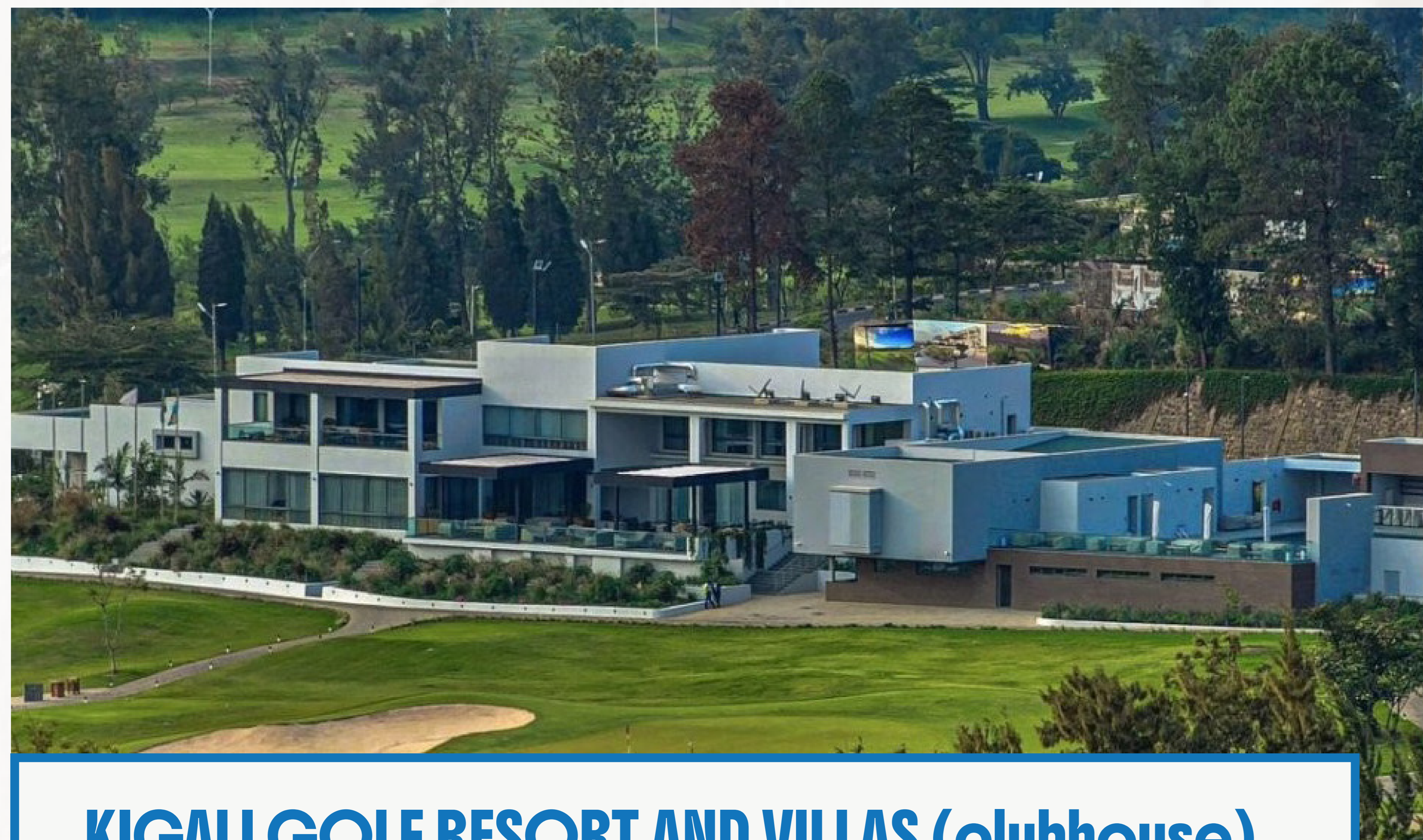
Client Name: Huye district

Category: Commercial

Location: Huye, Rwanda

Scope of Work: WE-MEP LTD carried out the supply, installation, and commissioning of mechanical, electrical, and plumbing systems. Mechanical work included firefighting systems to ensure safety and compliance with regulations. Electrical tasks involved power distribution, lighting, and wiring for reliable market operations. Plumbing covered water supply, drainage, and sanitary installations to support market functionality.

Project Execution



KIGALI GOLF RESORT AND VILLAS (clubhouse)

Client Name: MOTA ENGIL AFRICA

Category: Commercial

Location: Kigali, Rwanda

Scope of Work: At the Clubhouse of Kigali Golf Resort and Villas, WE-MEP LTD handled the supply and installation of a 630kV transformer. Our work ensured reliable power distribution, meeting the facility's energy needs. This included system integration, testing, and commissioning to guarantee safety and efficiency. The project supported uninterrupted operations for the resort's infrastructure.



HEZA ESTATE PHASE II

Client Name: AFRIPRECAST Ltd

Category: Apartments

Location: Kigali, Rwanda

Scope of Work: Our scope for Heza Estate Phase II included the review of drawings, installation, and commissioning of electrical systems and mechanically embedded works across the apartments, residential units, and communal areas. Our mechanical works encompassed the installation of plumbing systems for water supply and drainage. Additionally, we installed power distribution and lighting to ensure efficiency and functionality. These systems were implemented to provide a comfortable living environment while ensuring operational efficiency and sustainability.

Project Execution



RPF KAMONYI DISTRICT HQs

Client Name: RPF Kamonyi

Category: Government office

Location: Kamonyi, Rwanda

Scope of Work: The RPF Kamonyi District Headquarters is a modern administrative center supporting political and community activities in Rwanda’s Southern Province. Our work covered Power distribution Lighting systems Backup power (generators or UPS), Fire protection systems Designed and installed firefighting systems, Designed and implemented plumbing systems, covering: Water supply Drainage Sanitation, Installed CCTV cameras for enhanced security Installed and configured IT systems to improve operational efficiency.



Rwanda Fertilizer Company

Client Name: MOTA ENGIL AFRICA

Category: Industrial

Location: Bugesera, Rwanda

Scope of Work: WE-MEP provided comprehensive MEP services. that include preparing shop drawings, installing and commissioning robust electrical systems—encompassing We were responsible for the Installation of Electrical, IT, and Lighting Pole materials, installing poles with lighting fixtures, spotlights, and CCTV Cameras, Lighting system- installing mats, air terminal rods, and down conductors

Project Execution



ROYAL GOLF VIEW APARTMENT & HOTEL

Client Name: DND Developers

Category: Apartments

Location: Kigali, Rwanda

Scope of Work: Royal Golf View Apartment Hotel is a high-end mixed-use development located in Kacyiru, offering stunning views of golf courses and the Nyarutarama area. We were responsible for the installation of mechanical, electrical, and plumbing systems.



Vision City Phase II

Client Name: MOTA ENGIL AFRICA

Category: Apartments

Location: Kigali, Rwanda

Scope of Work: WE-MEP LTD was responsible for the supply, installation, and integration of mechanical, electrical, and plumbing systems. This included deploying advanced HVAC systems for climate control, setting up robust electrical distribution networks, and installing comprehensive plumbing systems to ensure reliable water supply and drainage. Our work emphasized precision, efficiency, and compliance with industry standards, enhancing the functionality and sustainability of residential development.

Project Execution



MASAKA RESIDENCE APARTEMENTS

Client Name: FORTIS GREEN Ltd

Category: Apartments

Location: Kigali, Rwanda

Scope of Work: WE-MEP/SPI delivered full MEP services to support the project's sustainability and affordability goals. We installed complete electrical systems, including power distribution, lighting, renewable energy provisions, and backup power. Mechanical services included HVAC, firefighting, water supply, drainage, rainwater harvesting, and a rainwater-based STP. ELV, plumbing, and sanitary systems were implemented to ensure safety, connectivity, and efficient resource management.



BUGESERA REAL ESTATE

Client Name: MUKERAMIRIMO Construction Ltd

Category: Apartments

Location: Bugesera, Rwanda

Scope of Work: At Bugesera Real Estate, WE-MEP LTD handled the supply, installation, and commissioning of electrical and plumbing systems. Electrical work involved setting up power distribution, lighting, and wiring to ensure reliable and efficient operations. Plumbing tasks included installing water supply, drainage, rainwater harvesting system, and fixing sanitary appliances and fixtures, ensuring functionality and comfort for the residences.

Our Clients





CONTACT US

☎ (+250) 788 307 952 | (+250) 782 750 432

✉ info@we-mep.rw



WE-MEP SPI



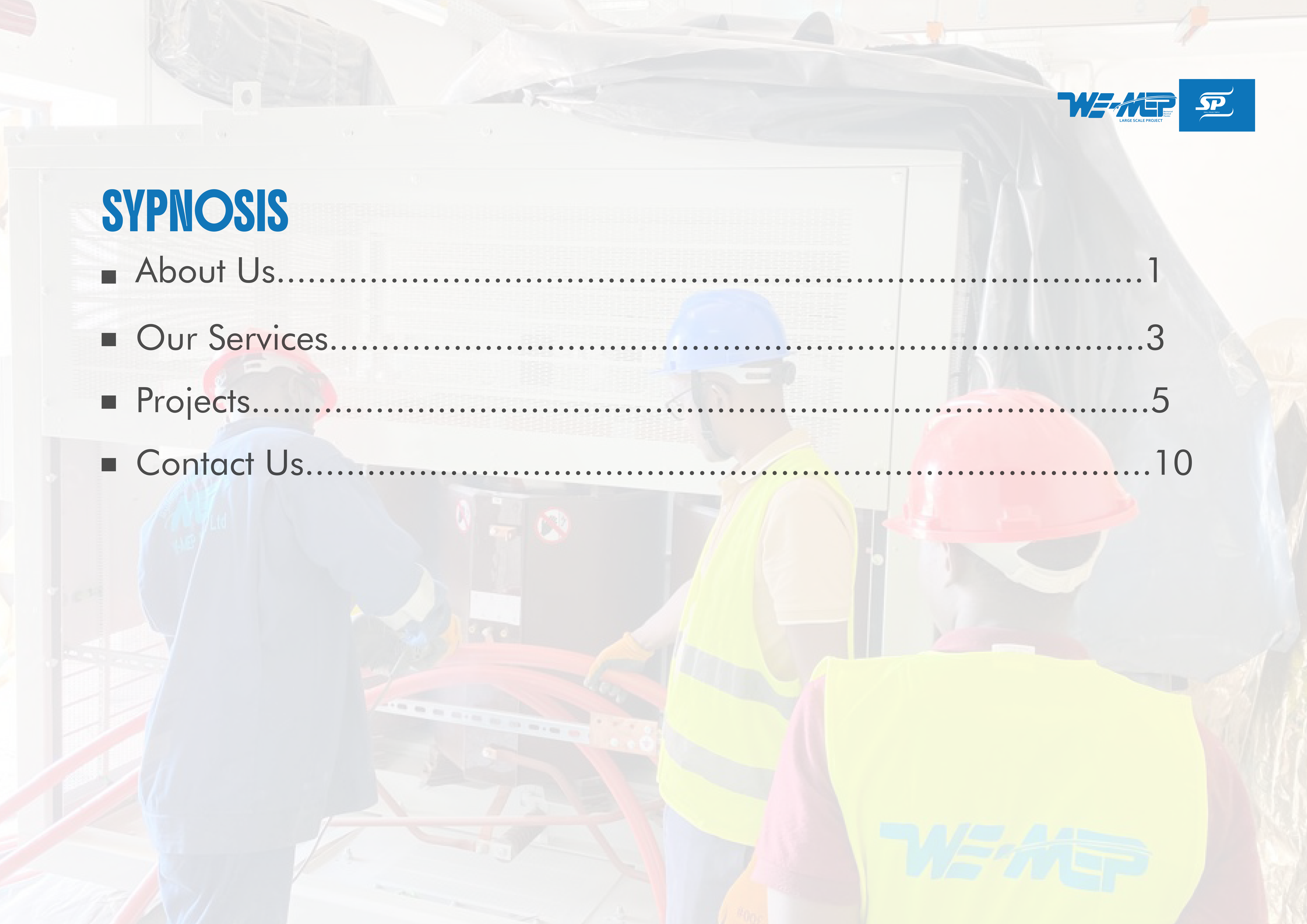
WE-MEP
Mechanical
Electrical
Plumbing
LARGE SCALE PROJECT

SPI
SMALL PROJECT IMPLEMENTATION

www.we-mep.rw/spi

SYPNOSIS

- About Us.....1
- Our Services.....3
- Projects.....5
- Contact Us.....10



ABOUT US

WE-MEP/SPI

WE-MEP/SPI (Small Project Implementation) as part of WE-MEP LTD which specializes in providing MEP services for small scale projects that are residential and commercial buildings with a focus on cost-effective, energy-efficient, and high-quality MEP solutions.





MISSION

To provide high-quality, efficient, and sustainable MEP solutions tailored for small projects, ensuring seamless integration, cost-effectiveness, and long-term client satisfaction.



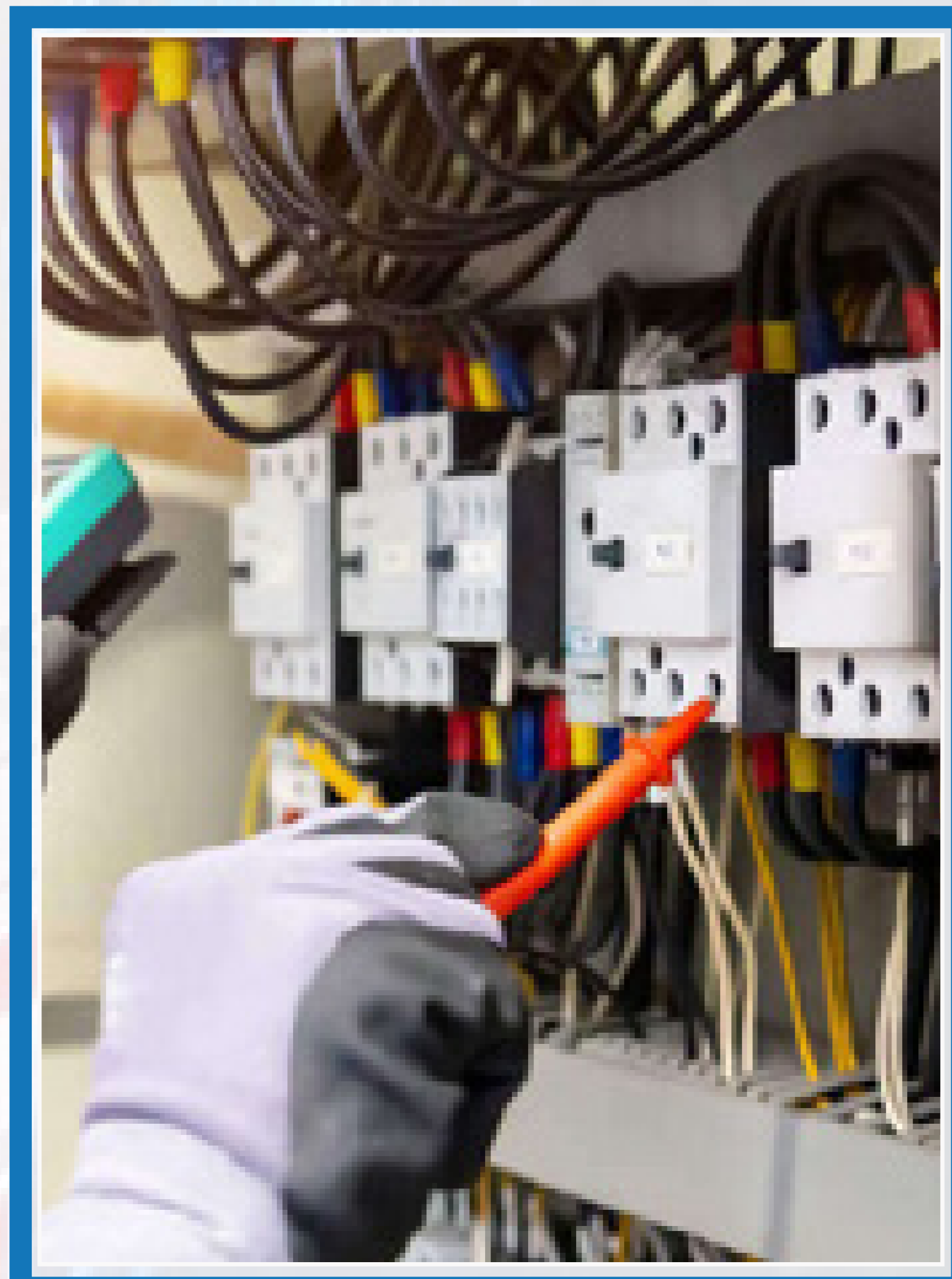
VISION

To be the leading MEP services provider for small-scale projects, recognized for professional, innovative, quality, and customer-focused solutions that enhance building efficiency and sustainability.

Services

Mechanical Services

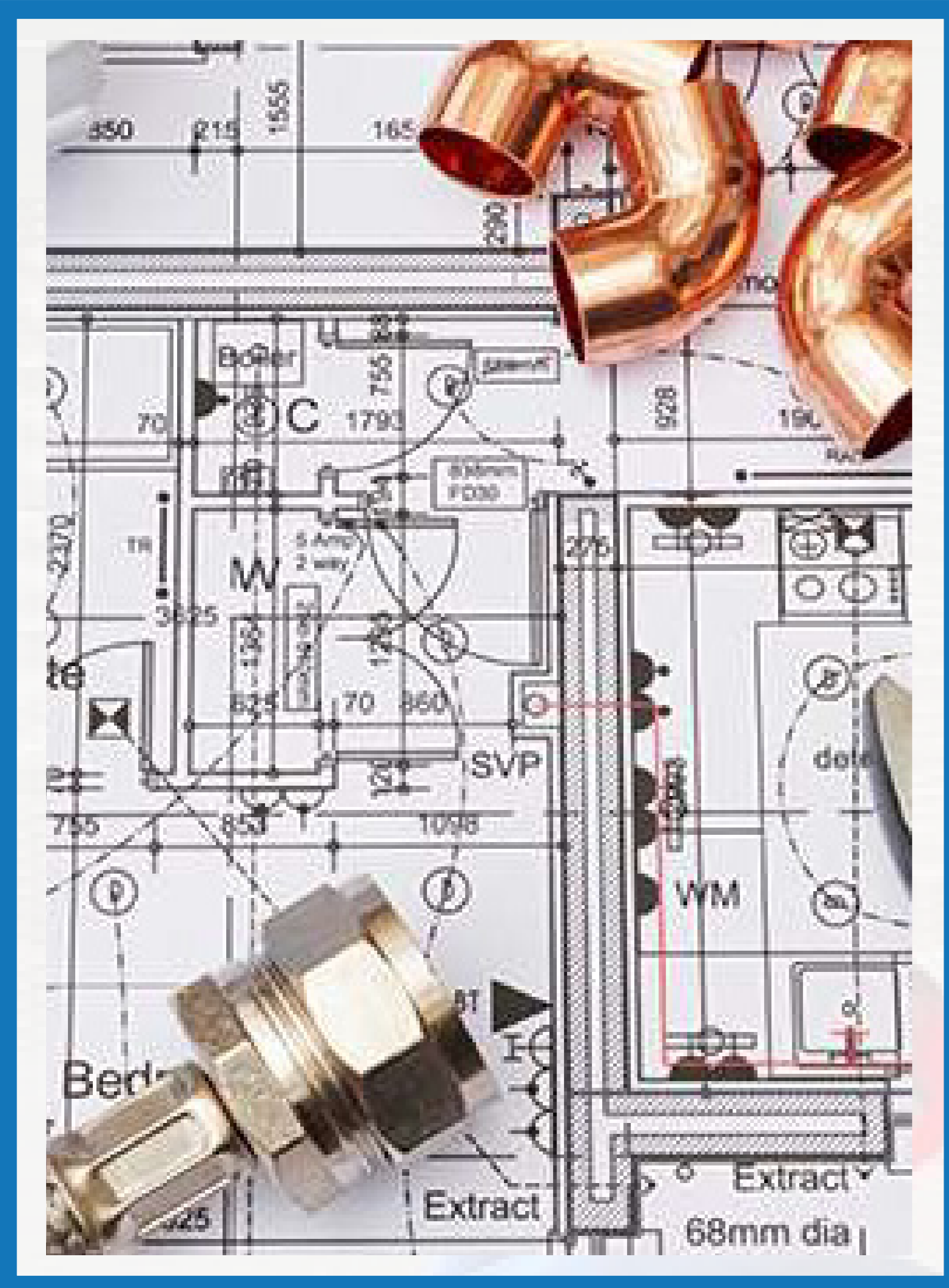
At WE-MEP SPI, we are experts in HVAC (Heating, Ventilation & Air Conditioning) solutions, including automated control systems designed to optimize your business environment. With a deep understanding of climate challenges in Rwanda, we deliver high-performance MEP systems that ensure efficiency, comfort, and sustainability. Whether it's system design, installation, or maintenance, our team is committed to providing cutting-edge environmental solutions tailored to your needs.



Electrical Services

We offer a complete service from feasibility study to conceptual design and installation. We offer electrical engineering services in Rwanda

We have preferred contractor status for many of the regions high profile clients where we offer longstanding relationships built around our ability to provide innovative solutions. We also work closely with design teams as a preferred contractor where we carry out project work specifically to your requirements.



Plumbing Services

Our plumbing services team handles all aspects of plumbing, water supply, drainage, swimming pool filtration systems & firefighting works. Our plumbing engineers design with an approach in influencing high water efficiency, energy, fire protection, pollution systems and a sustainable site. We are able to provide assessments, recommend alternatives, and thus provide high-functioning systems that meet the client's very specific individual need as well as assisting in conserving natural resources.

Maintenance Services

Our maintenance services ensure the longevity and efficiency of your MEP systems. WE-MEP offers routine inspections, troubleshooting, and repairs to keep your infrastructure in optimal condition. Our proactive approach minimizes downtime and extends the lifespan of critical systems.



Our Projects



MUKAKARISA RESIDENTIAL

Client Name: MUKAKARISA BUGESERA

Category: Apartments

Location: Bugesera, Rwanda

Scope of Work: At the MUKAKARISA Residential Building in Bugesera, WE-MEP/SPI carried out electrical works, installed CCTV and IT systems, and completed plumbing installations to ensure reliable energy, security, connectivity, and efficient cold and hot water supply, drainage, and rainwater collection for the residents.



**AGABA HOTEL & APARTMENT
KIMIHURURA**

Client Name: AGABA ENGINEERING LTD

Category: Apartments

Location: Kigali, Rwanda

Scope of Work: At AGABA Hotel & Apartment, WE-MEP/SPI delivered full MEP services, including air conditioning, electrical systems, CCTV installation, IT infrastructure, and plumbing works. Our contributions provided reliable energy, enhanced security, seamless connectivity, and efficient water supply, drainage, and rainwater management.

Projects



AGABA APARTMENT KIBAGABAGA

Client Name: AGABA ENGINEERING LTD

Category: Apartments

Location: Kigali, Rwanda

Scope of Work: AGABA Apartment in Kibagabaga, Kigali, is a modern development designed for comfort, functionality, and style. It features thoughtfully planned living spaces like living rooms, bedrooms, kitchens, and balconies, along with amenities such as parking and recreational areas. Equipped with advanced systems, it ensures convenience, safety, and easy access to nearby schools, hospitals, and shopping centers.



Charles RESIDENTIAL GACURIRO

Client Name: Charles

Category: Residential

Location: Kigali, Rwanda

Scope of Work: At Charles Residential, WE-MEP/SPI executed full MEP services, including electrical systems, air conditioning, CCTV installation, IT infrastructure, and plumbing works. These efforts delivered reliable energy, security, connectivity, and efficient solutions for cold and hot water, drainage, and rainwater management.

Projects



IHIRWE RESIDENTIAL KACYIRU

Client Name: IHIRWE

Category: Residential

Location: Kigali, Rwanda

Scope of Work: At IHIRWE Residential, WE-MEP/SPI delivered full MEP services, including air conditioning, electrical systems, CCTV installation, IT infrastructure, and plumbing works. Our work ensured reliable energy, enhanced security, seamless connectivity, and efficient solutions for water supply, drainage, and rainwater management.



FAUSTIN RESIDENTIAL GISOZI

Client Name: Faustin

Category: Residential

Location: Kigali, Rwanda

Scope of Work: At Faustin Residential, WE-MEP/SPI provided full MEP services, including air conditioning, electrical systems, CCTV installation, IT infrastructure, and plumbing works. Our work ensured reliable energy, enhanced security, seamless connectivity, and efficient water supply, drainage, and rainwater management.

Projects



MARTIN VILLA HOUSE

Client Name: Martin Martin MIETH

Category: Residential

Location: Kigali, Rwanda

Scope of Work: MARTIN VILLA HOUSE, Kigali, is a modern building designed to provide comfort, functionality, and style. It features thoughtfully designed living spaces, including living rooms, bedrooms, kitchens, and balconies, along with amenities such as parking and recreational areas. Equipped with advanced systems, it ensures convenience, safety, and proximity to schools, hospitals, and shopping centers.



JOEL RESIDENTIAL KIBAGABAGA

Client Name: Joel

Category: Residential

Location: Kigali, Rwanda

Scope of Work: At JOEL Residential, WE-MEP/SPI delivered full MEP services, including air conditioning, electrical systems, CCTV installation, IT infrastructure, and plumbing works. Our efforts provided reliable energy, enhanced security, seamless connectivity, and efficient water supply, drainage, and rainwater management

CONTACT US

☎ (+250) 795 581 606 | (+250) 725 499 663

✉ info@we-mep.rw



WE-MEP SPI